

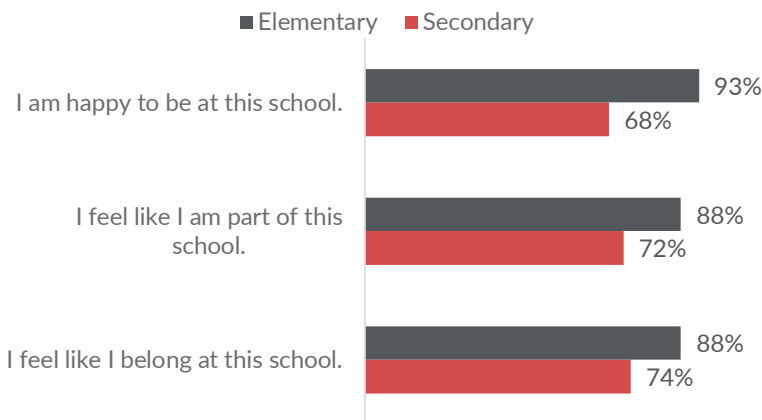
In the spring of 2022, Hatboro-Horsham School District (HHSD) administered a Student Wellness survey to students in Grades 4 to 12 to gather their feedback on school environment, safety, and student engagement. In total, 1,819 respondents (523 elementary students and 1,296 secondary students) participated in this survey. HHSD is now sharing the survey findings with the community.

To support this effort, HHSD has partnered with Hanover Research (Hanover) to create the following infographic, which provides a summary of key findings based on the survey results for each of the main survey themes: Student Engagement, School Environment, and School Safety. The first two pages of the infographic present general findings across all HHSD schools. Pages three and four present relevant survey findings for each individual school.

KEY FINDINGS

SCHOOL ENVIRONMENT & STUDENT ENGAGEMENT

Most students perceive their school environment positively. At least 88% of elementary students are happy and feel like they belong at their schools. However, compared to elementary students, secondary students indicate lower agreement on positive school environment statements.



93%

of elementary students report being proud of how their school looks.



52%

of secondary students report being proud of how their school looks from the outside.



56%

of secondary students agree that their schools' grounds are kept clean.

EQUITY & IDENTITY

Most students report that students from diverse backgrounds and demographic characteristics get along well at their school. Smaller shares agree that all students at their school are treated fairly (65%) and equally (70%).



95%

of elementary students agree that people from all races get along well at school.



70%

of elementary students affirm that all students at their school are treated the same.



84%

of secondary students agree that people of different backgrounds, races, genders, abilities, or ethnicities get along well at school.

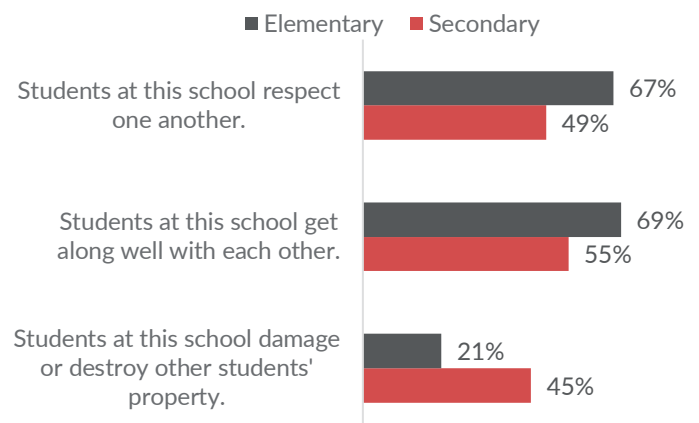


65%

of secondary students affirm that all students at their school are treated fairly.

STUDENT CONDUCT

Perceptions of student conduct vary greatly by grade band. While elementary students generally agree that students at their school respect one another (67%) and get along with each other (69%), only about half of secondary students agree with these statements.

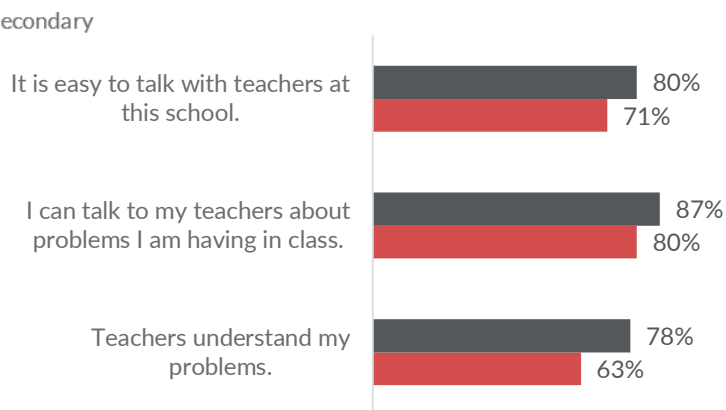
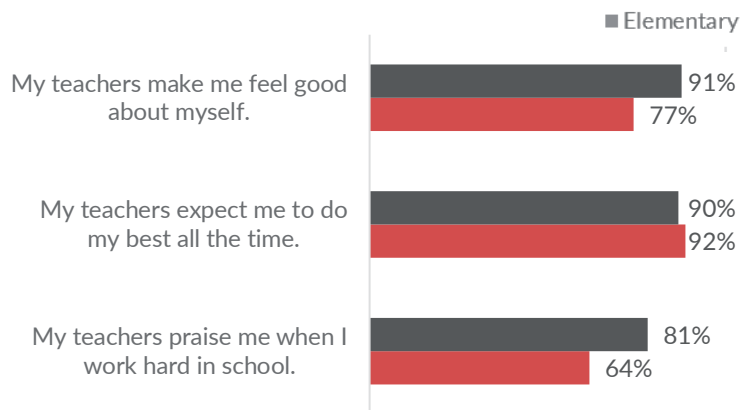


KEY FINDINGS (CONTINUED)

TEACHER-STUDENT RELATIONSHIPS & TEACHER SUPPORT

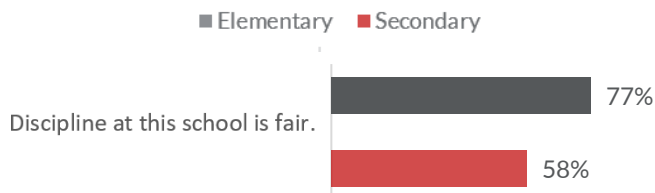
Students largely agree that teachers at their school make them feel good about themselves and set high expectations for students. Compared to other areas, fewer students agree that their teachers praise them when they work hard in school.

Most students also affirm that it is easy to talk with their teachers and that teachers understand their problems. Elementary students are more likely than secondary students to believe their teachers understand their problems.



DISCIPLINE

Secondary students are less likely than elementary students to agree that discipline at their school is fair. Most elementary and secondary students know what behaviors are acceptable at their school.



75%

of elementary students affirm that students at their school know how they are supposed to behave.



93%

of secondary students affirm that their teachers make it clear what are acceptable and unacceptable behaviors in class.

BULLYING & HARASSMENT

Over half of elementary students report knowing at least one student who has experienced bullying at school. Nearly half of secondary students report that students often experience bullying at their school.



58%

of elementary students report that they know a student that has been bullied at their school.

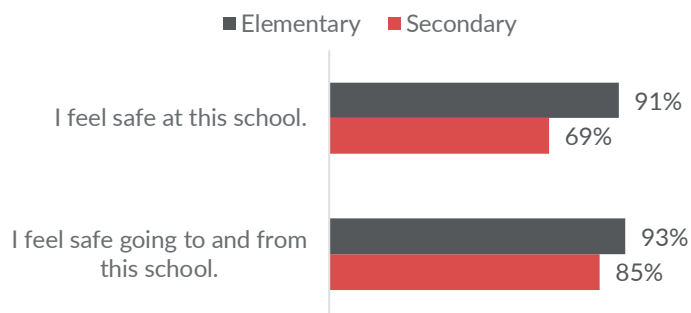


41%

of secondary students report that students at their school are often bullied.

SCHOOL SAFETY

Overall, students feel safe at school, as well as going to and from their school. Perceptions regarding school safety vary by grade band. Like previous findings, agreement on school safety is lowest at the secondary school level.



INFOGRAPHIC: 2022 STUDENT WELLNESS SURVEY

ELEMENTARY SCHOOLS

This section presents survey results from students attending the district's four elementary schools. All the results are reported as percentages (e.g., percentage of students agreeing or disagreeing with a statement). These percentages combine the highest 2 responses (e.g., "Agree" + "Strongly Agree") for each survey question.

BLAIR MILL ELEMENTARY SCHOOL

ENGAGEMENT

70%

agree that **all students** at this school are treated the same.

98%

agree that **adults** at this school **treat students with respect.**

ENVIRONMENT

88%

report that they are **proud** of how this school looks.

81%

agree that **discipline** at this school is fair.

SAFETY

61%

report that they **know** a student who has been **bullied** at school.

90%

report that they **feel safe** at this school.

CROOKED BILLET ELEMENTARY SCHOOL

ENGAGEMENT

62%

agree that **all students** at this school are treated the same.

84%

agree that **adults** at this school **treat students with respect.**

ENVIRONMENT

91%

report that they are **proud** of how this school looks.

71%

agree that **discipline** at this school is fair.

SAFETY

55%

report that they **know** a student who has been **bullied** at school.

88%

report that they **feel safe** at this school.

HALLOWELL ELEMENTARY SCHOOL

ENGAGEMENT

76%

agree that **all students** at this school are treated the same.

88%

agree that **adults** at this school **treat students with respect.**

ENVIRONMENT

96%

report that they are **proud** of how this school looks.

79%

agree that **discipline** at this school is fair.

SAFETY

65%

report that they **know** a student who has been **bullied** at school.

93%

report that they **feel safe** at this school.

SIMMONS ELEMENTARY SCHOOL

ENGAGEMENT

73%

agree that **all students** at this school are treated the same.

92%

agree that **adults** at this school **treat students with respect.**

ENVIRONMENT

93%

report that they are **proud** of how this school looks.

77%

agree that **discipline** at this school is fair.

SAFETY

54%

report that they **know** a student who has been **bullied** at school.

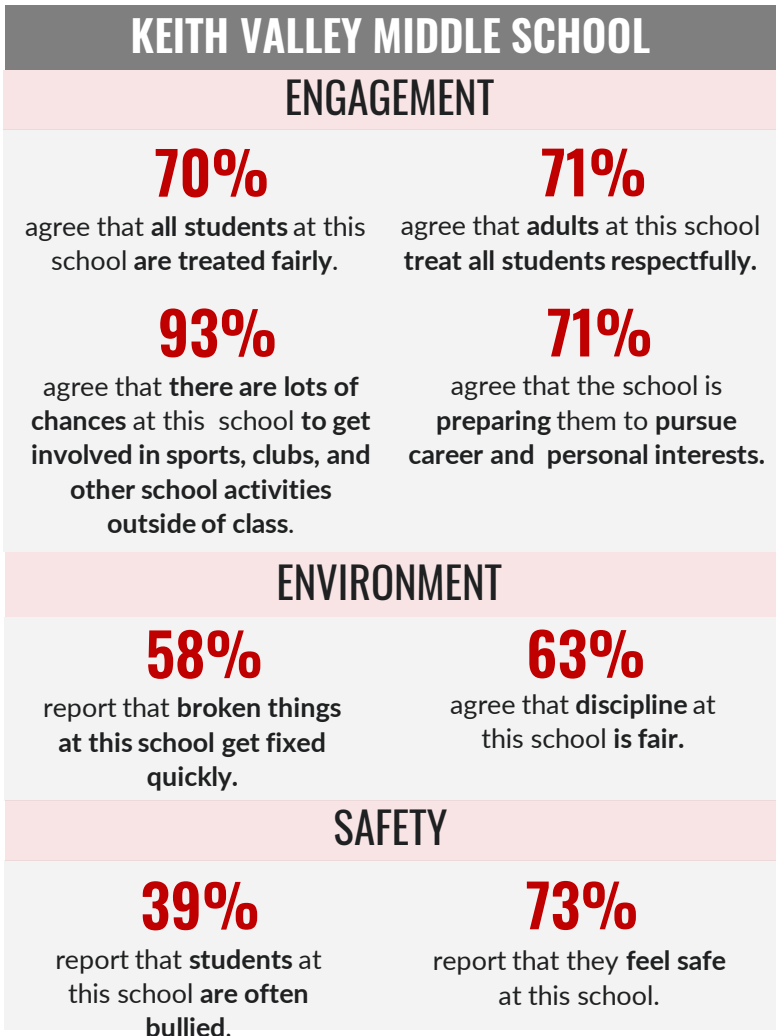
92%

report that they **feel safe** at this school.

INFOGRAPHIC: 2022 STUDENT WELLNESS SURVEY

SECONDARY SCHOOLS

This section presents survey results from students attending the district's middle and high school. All the results are reported as percentages (e.g., percentage of students agreeing or disagreeing with a statement). These percentages combine the highest 2 responses (e.g., "Agree" + "Strongly Agree") for each survey question.



SURVEY RESPONDENTS

