

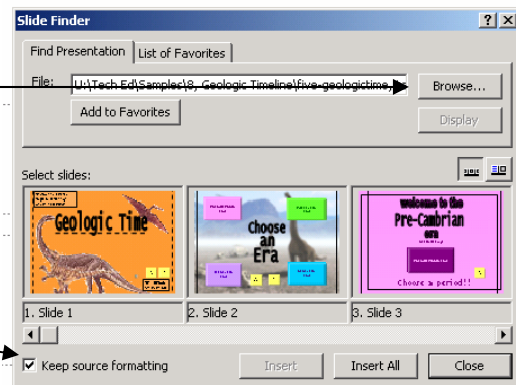
# Combining PowerPoint Presentations

- Choose one person to be the host for the project. This person must save the presentation into his/her Science network folder.
- The other member or members of the group need to save his/her presentation to a floppy disk (or Mrs. Fasy's flash drive).
- Next take the disk to the host's computer and insert the disk into the disk drive.
- Click on the last slide of the host's presentation.

- Choose INSERT > SLIDES FROM FILE > BROWSE

- Navigate to the floppy disk and click on the file you want to open

- Check off KEEP SOURCE FORMATTING in the bottom left corner



- Click INSERT ALL
- Go to VIEW > SLIDE SORTER and rearrange the slides in the order according to the Geologic Time Project sheet.
- Now you are ready to hyperlink and animate!